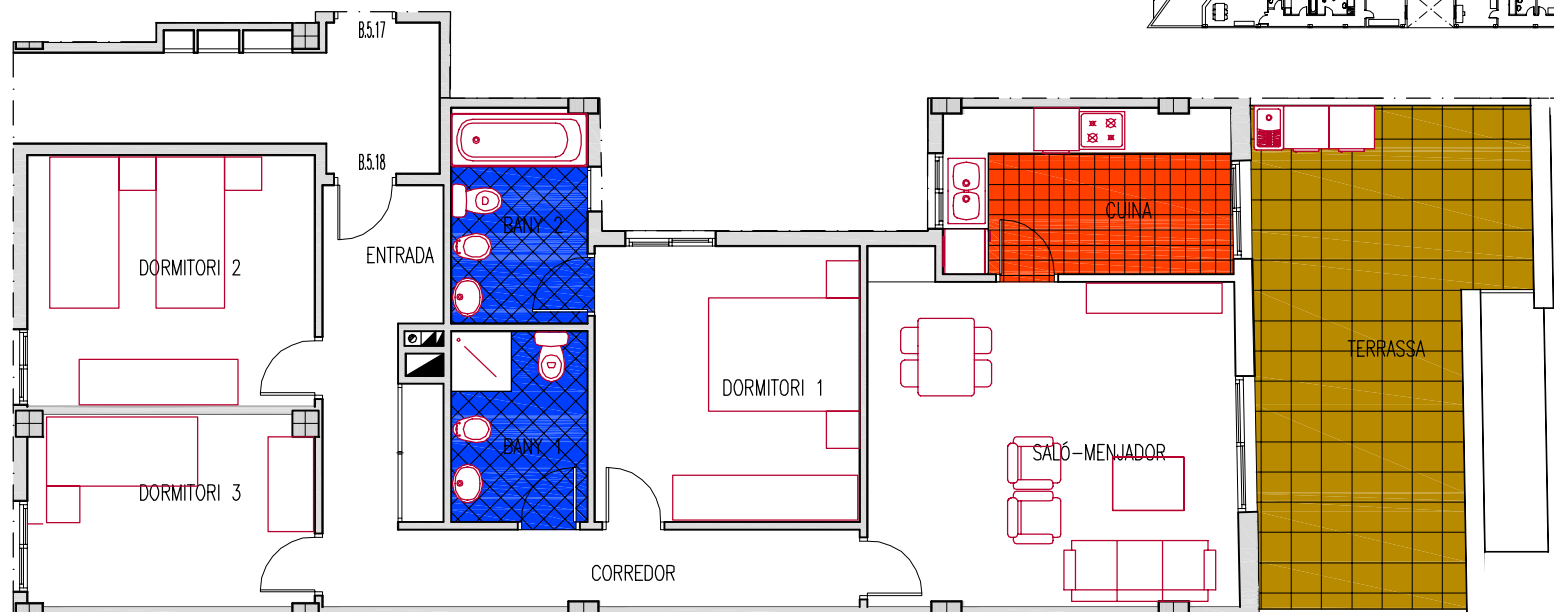
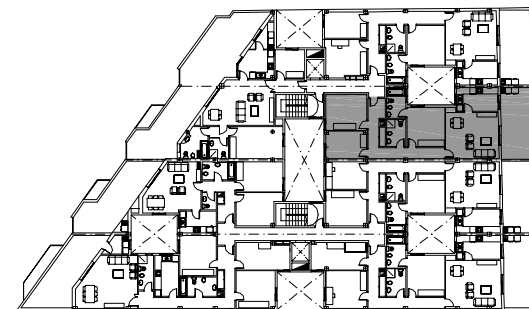


# Vivienda B.5.18



E= 1/100

..SUP. UTIL.....	=89.02m <sup>2</sup>
SUP. CONST.....	=100.17m <sup>2</sup>
SUP. CONST AMB ELEMENTS COMÚNS.....	=109.44m <sup>2</sup>
SUP. TERRASSES.....	=20.62m <sup>2</sup>

# conscea