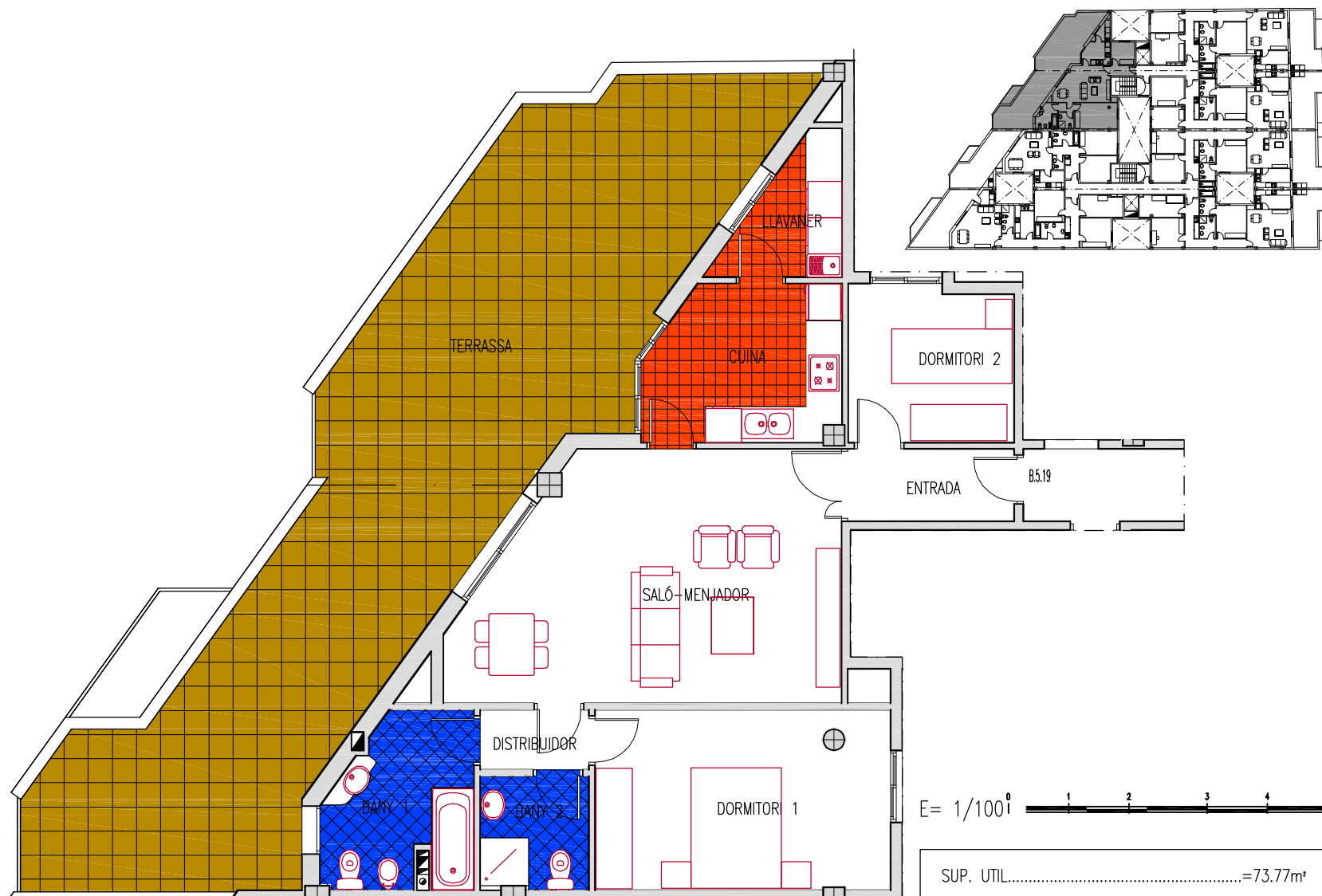


# Vivienda B.5.19



E= 1/100<sup>0</sup>

SUP. UTIL.....	=73.77m <sup>2</sup>
SUP. CONST.....	=86.17m <sup>2</sup>
SUP. CONST AMB ELEMENTS COMÚNS.....	=94.15m <sup>2</sup>
SUP. TERRASSES.....	=57.89m <sup>2</sup>

# conscea